



**Smiths Beach Rocks
Climbing Guide**
Krish Seewraj

Warning about Rock Climbing

Keep in mind that this is only a guide, it helps climbers to find out what climbs have been recorded and that is all. The information given is true and accurate to the best of the author's knowledge.

Remember climbing is an adventure sport and as such you may be seriously injured or killed. The grades and descriptions may be subject to debate as many of the climbs have only had a few actual and/or known ascents. Therefore, be warned that you must exercise your own judgment with regard to the route location, description, difficulty and your ability to safely protect yourself from the risks of rock climbing.

You should not depend on any information gleaned from this mini-guide for your personal safety. Your safety depends on your own experience, equipment and climbing skill. If you have any doubt as to your ability to safely attempt any route described in this mini-guide, do not attempt it. When you use this mini-guide, you accept and acknowledge the risk that it may contain errors. The responsibility for your safety is solely yours.



Krish Seewraj sampling the rock here for the first time with a first ascent of Lady Guinevere (16)

© Apr 2026 Krish Seewraj

All rights reserved. No part of this guide may be reproduced or transmitted in any form or by any means, electronic or mechanical, without written permission from Krish Seewraj, kermi@iinet.net.au

Front cover image: Craig Johnson relishing in the magic of a first ascent to create Merlin (14)

Rear cover image: Chris Howe enjoying a Sandy Sunday (13)

Introduction

This area is known to have been visited by climbers before, however no written or verbal records of route descriptions or grades were available. During late 2010 and early 2011 a number of climbers visited this area and kept the records provided in this mini-guide.

Warning: This crag is very close to the ocean with some climbs starting just above the water line, it is important to check and observe the conditions before attempting to access this area. Climbing is not recommended when there are high swells or winds, note also on seemingly calm days freak waves can occur along this area.



Location and Access

The crag is a 260km drive from Perth and forms the headland just north of canal rocks. The area provides magnificent and atmospheric views across the bay. Located within the Leeuwin-Naturaliste National Park it is only a ten minute drive south from Yallingup.

As you approach Yallingup turn left onto Caves Road, after 2.7km turn right onto Canal Rock Road and after another 1.4km turn right onto Smiths Beach Road. Follow this road past Smiths Beach Resort until it ends at a turning area.

Park up and follow the Cape to Cape walking trail for approximately 500m. The crag and access to the various faces should become self evident.

The faces are shaded in the early morning and late afternoon so it is an ideal spot year round.

Future Development

If anyone would like to share their past or future experiences in this area, details of new or listed routes as well as any reference issues, typos or mistakes in this mini-guide email them to kermit@iinet.net.au.



Rock, Protection & Grading

Smiths Beach Rocks provide a great granite experience with rounded holds, parallel and often flared cracks, superb friction and generally solid rock, although the occasional flakey or loose hold may be encountered. It seems to have earned a bit of a reputation, and a solid trad head is advisable.

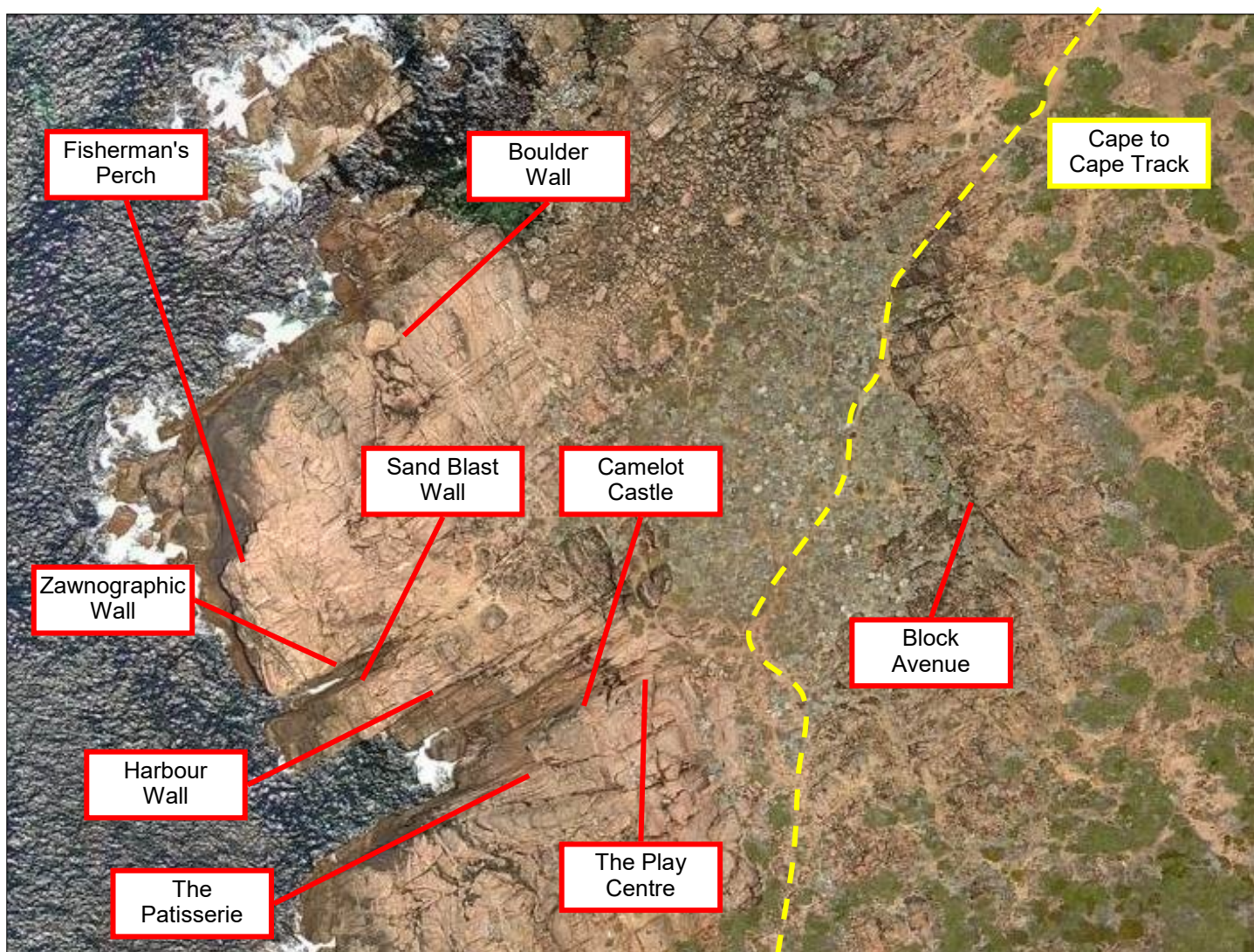
All of the routes have been ascended ground-up with natural protection unless otherwise stated. A standard rack will suffice noting a full set of cams is advisable and on occasion there is a need to pull out those small RPs. The routes offer a traditional climbing experience and as such can feel heady at times, even though they only range in length from 6m to 15m.

There have been some good quality traverses climbed on a number of the faces in this area, however due to the concentration of routes and to ensure the topos remain clear they have not been included.

Grading has and always will be a contentious issue, subject to personal preference, skills and stature. To further complicate the tyranny of numbers many of the climbs have had few if not a single ascent and therefore, the grades given should be treated cautiously. As such it is best to read the description carefully, look at the climb and make your own judgment.

While Ryan Doe, Justin Harrison, Kym Hartley, Craig Johnson, Chris Wiggins and myself have had great fun in discovering and documenting this area, we knew the area had previously been visited by other climbers. If proof of ascents made before these records were compiled can be provided then those routes will be renamed with first ascentist assigned.

General Area Topo



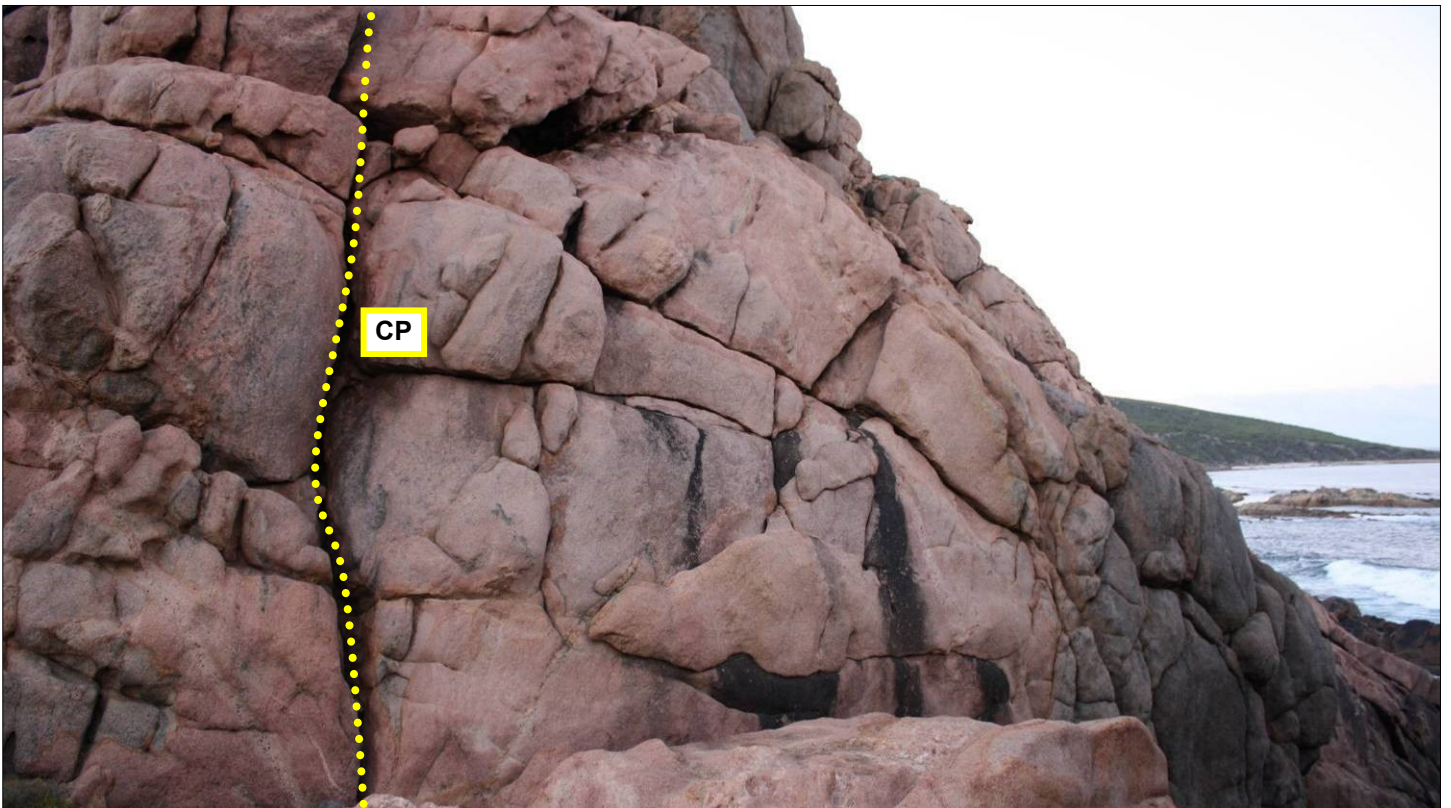
Block Avenue



Small Pro (8m, 12)

The most prominent crack system in this wall, it is thin and balancy needing small protection (Craig Johnson, Krish Seewraj 2010).

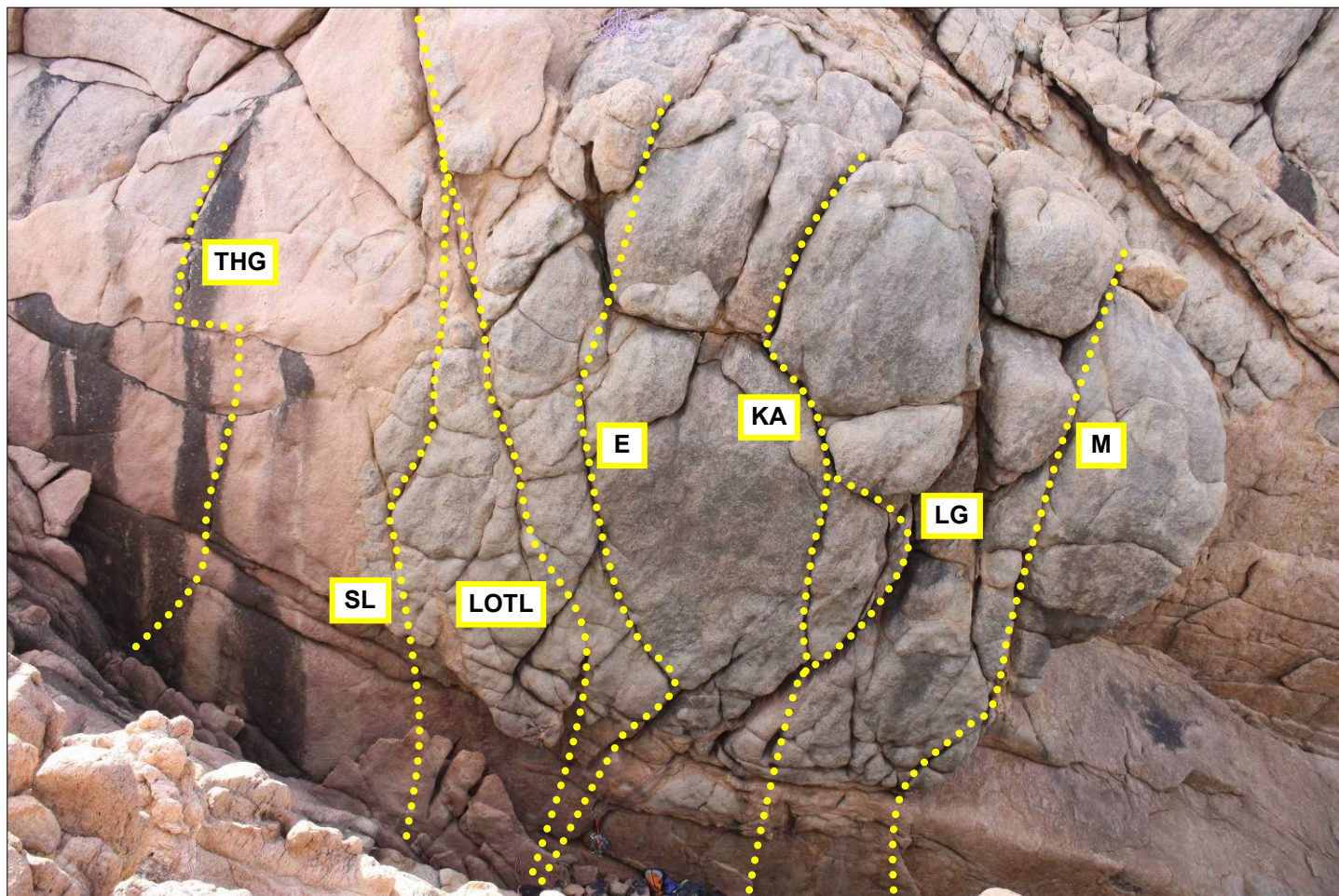
The Play Centre



Childs Play (10m, 6)

A fun beginner's climb that is out of the zawn area, follow the crack through the boulders (Justin Harrison, Krish Seewraj 2010).

Camelot Castle



The Holy Grail (8m, 21)*

A steep slabby climb using horizontal features and a vague vertical crack in the mid section, poorly protected in the mid section with ground fall potential (Krish Seewraj 2010).

Sir Lancelot (10m, 19)

Up to the under cling flake and then power up onto the headwall following the right tending crack, don't get too pumped placing gear (Krish Seewraj, Craig Johnson 2010).

Lady of the Lake (10m, 18)

Access the lower part of the headwall just right of its lowest point tend left up the rounded crack (Krish Seewraj, Craig Johnson 2010).

Excalibur (10m, 19)**

Now usually climbed directly from below as for LOTL, the original line started to the right heading up and right until it is possible to step back left (with difficulty) to gain access to the crack system in the middle of the headwall (Krish Seewraj, Craig Johnson 2010).

King Arthur (10m, 18)**

Start directly below the vertical crack in the looming wall, straight up before a step left to allow the finishing touches through the wide cracks. Upon reflection a grade has been added to this feisty number, and it may deserve one more (Krish Seewraj, Craig Johnson 2010).

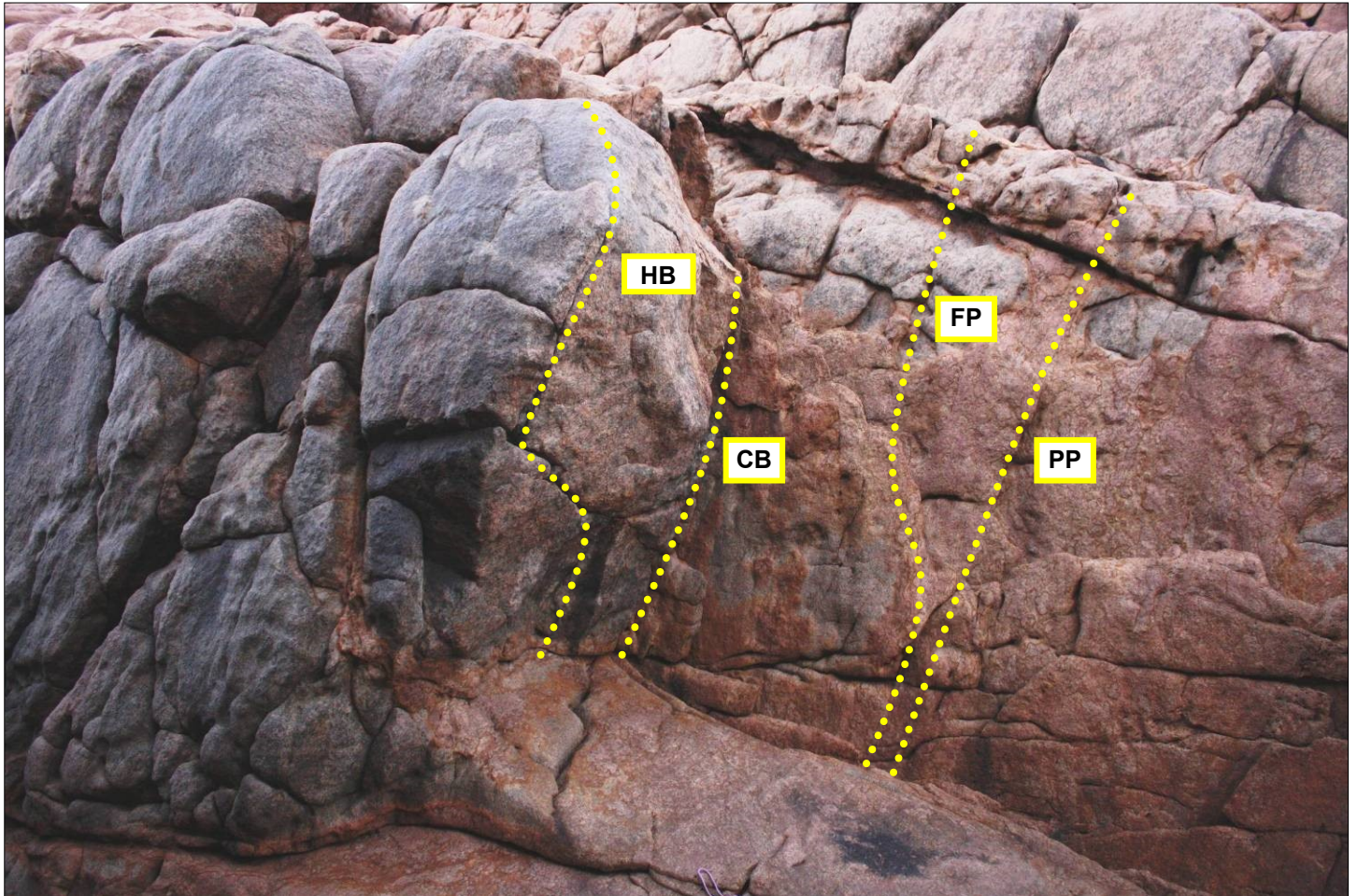
Lady Guinevere (10m, 16)

As for KA but avoiding the vertical crack by sneaking up the chimney to the right, proves less sustained and a tad easier (Krish Seewraj, Craig Johnson 2010).

Merlin (10m, 14)

The flake below the right hand end of the main headwall, before the step and awkward arête it tackled preferably without taking a rest on the big shelf (Craig Johnson, Krish Seewraj 2010).

The Patisserie



Hard Baked (7m, 26)

Traverse leftwards along the horizontal rail then up the steep finger crack to a rounded finish. Originally listed as a project after we flailed about on it during many attempts, it has since had a clean ascent to confirm the grade but there are no records of who or when.

Corner Bakery (6m, 11)

The corner chimney provides fun tradition style climbing (Justin Harrison, Krish Seewraj 2011).

Flakey Pastry (6m, 8)

Up the flakes and wall just to the right of the corner (Justin Harrison, Krish Seewraj 2011).

Puffed Pastry (6m, 10)

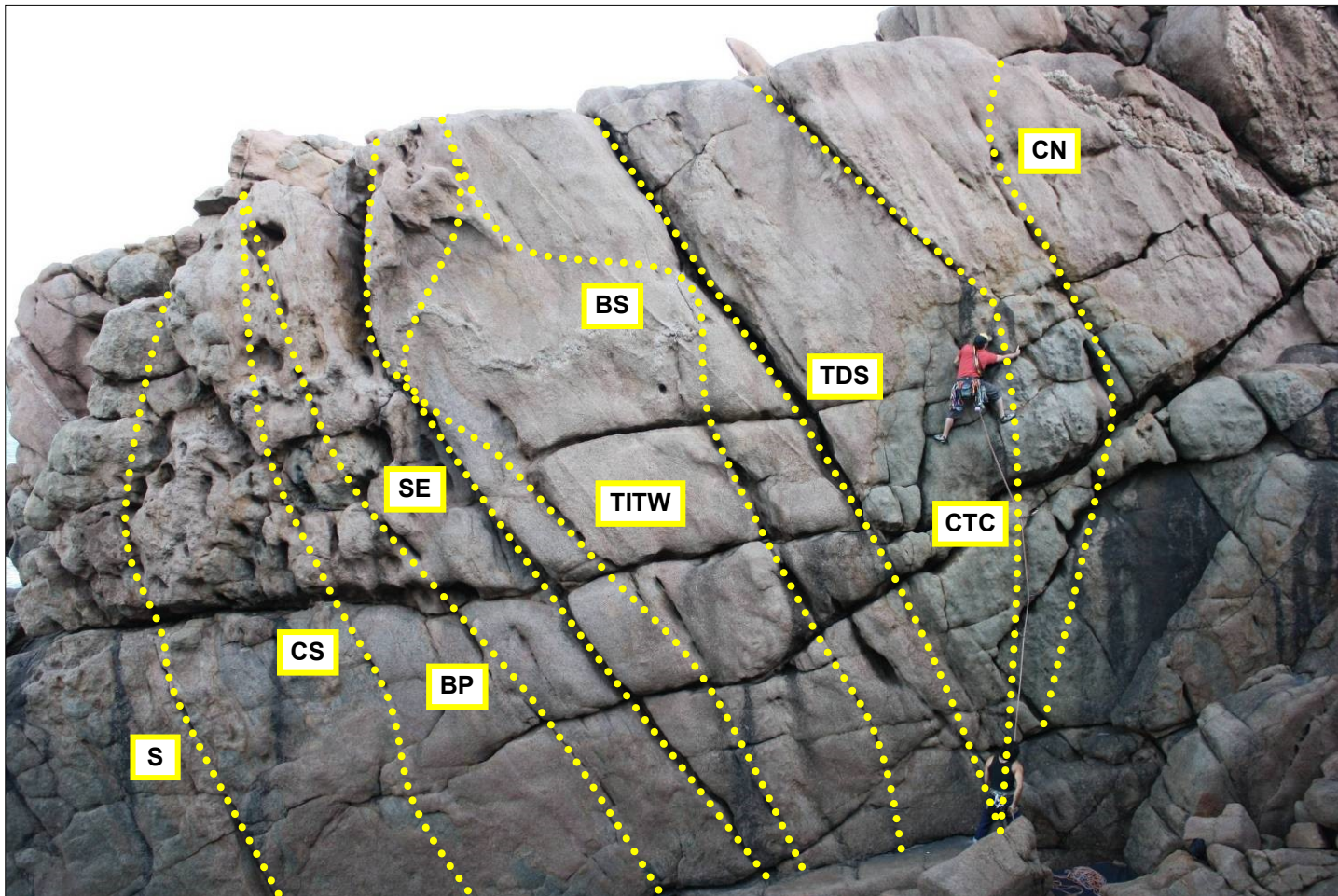
Start up the flake and wall system to the right, with a steeper finish to FP (Craig Johnson, Krish Seewraj 2010).

This next climb is located on Harbour Wall, see the next page/topo:

Crow's Nest (15m, 17)

Up the blocky wall trending rightwards to where a series of pockets lead up the headwall, with a big reach from the last one to the top as you search for something to hold on to (Krish Seewraj, Craig Johnson 2010).

Harbour Wall



Cape to Crack (15m, 17)**

Straight up through horizontal breaks to the stunning overhung left tending crack (Kym Hartley 2010).

The Drunken Sailor (15m, 14)*

Reachy moves up the bottom wall gain access to the widening crack/chimney, you can fight it but it is best climb the chimney worm style to allow access to gear (Kym Hartley 2010).

Buffalo Soldier (15m, 23)

Up the rounded vertical crack system in the wall to the left of TDS, from a small stance place gear high in the wide crack to the right and then traverse out left on very thin holds finishing up the hollow flake (15 if you finish up TDS) (Krish Seewraj 2011).

Tacking into the Wind (15m, 16)

Up the pocketed wall right of SE, when the pockets run out place gear in the wide crack to the left and then step out right and up to exit over the small roof (14 if you finish up SE) (Krish Seewraj, Justin Harrison 2011).

Seafood Extender (15m, 13)

Follow the crack that gets wider the higher you go, exit either through the vertical chimney or using the bulging wall that forms the right hand side of the chimney (Kym Hartley 2010).

Bulging Pockets (15m, 13)

A few meters left of SE climb up the pocketed wall continuing up the bulgy headwall (Krish Seewraj, Craig Johnson 2010).

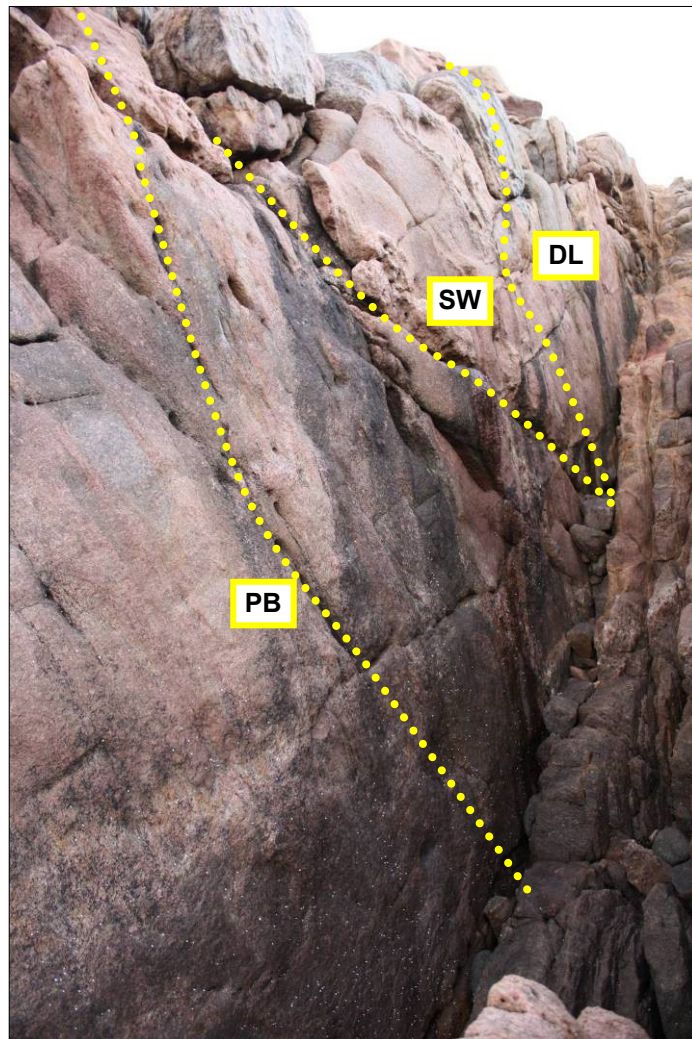
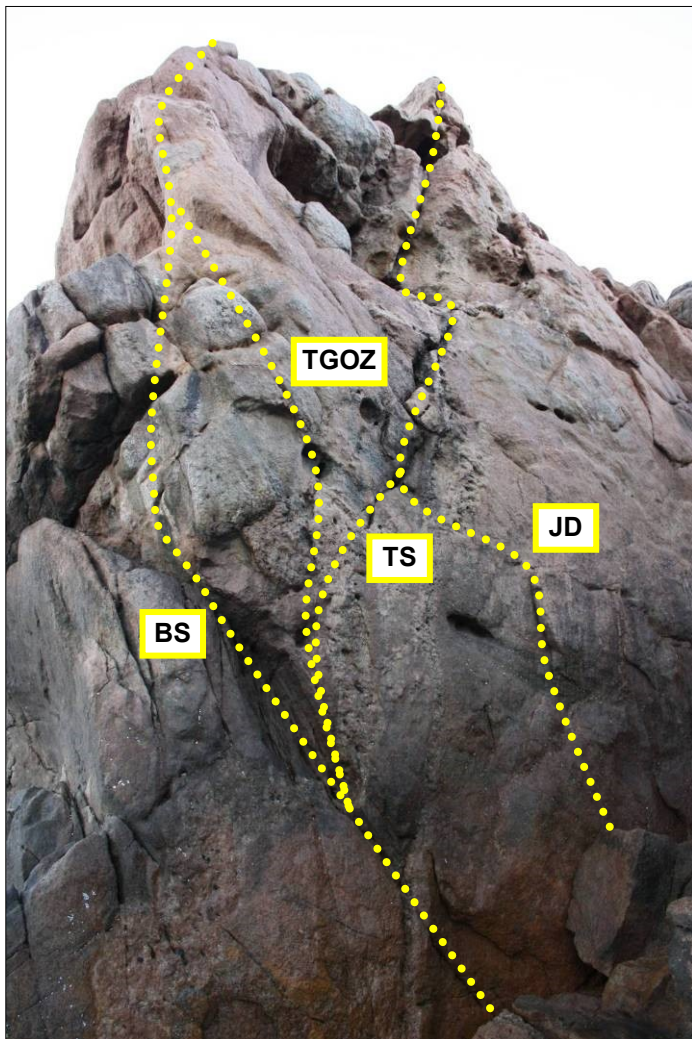
Crab Scuttle (15m, 17)

Unprotected bouldery moves up the wall to the prominent flake at 3m, then straight up on better holds finishing up the rounded holds on the headwall (Krish Seewraj, Craig Johnson 2010).

Scurvy (15m, 17)

The left tending crack provides thin balancy climbing before holds improve, from here trend right to maximize the climbing up the final wall (Krish Seewraj, Craig Johnson 2010).

Zawnographic Wall



Deceptive Looks (6m, 13)

At the right end of the wall there is a series of horizontal features, up these in search of the best holds and gear to finish up the boulder right of a wide crack (Krish Seewraj, Craig Johnson 2011).

Side Walk (6m, 10)

Start as for DL but follow the widening left tending crack system (Craig Johnson, Krish Seewraj 2011).

Photographic Belayer (8m, 17)

Start 5m left of SW, surprisingly good holds provide a way up the bottom wall to a flake, from here ask your belayer to concentrate as you ascend the flake and right wall nervously until you reach the pockets for more gear (Craig Johnson, Krish Seewraj 2011).

Jefferson Drive (15m, 15)

From a boulder climb up to a flake, make a tenuous left traverse and continue up the crack system passing a cavelet (Krish Seewraj, Craig Johnson 2011).

The Smithsonian (15m, 15)

Step out over the water to access the base of a left tending ramp step up and right to gain the crack system of JD (Kym Hartley 2010).

The Girls of Zawn (15m, 19)*

Start as for TS, from the base of the ramp step onto the pocketed wall and climb straight up continuing on the arête and pockets above (Kym Hartley 2010).

Billowing Sails (15m, 17)**

Step out as for TS and continue up the left tending ramp, at the top of the ramp straight up until you eventually join TGOZ (Krish Seewraj, Craig Johnson 2011).

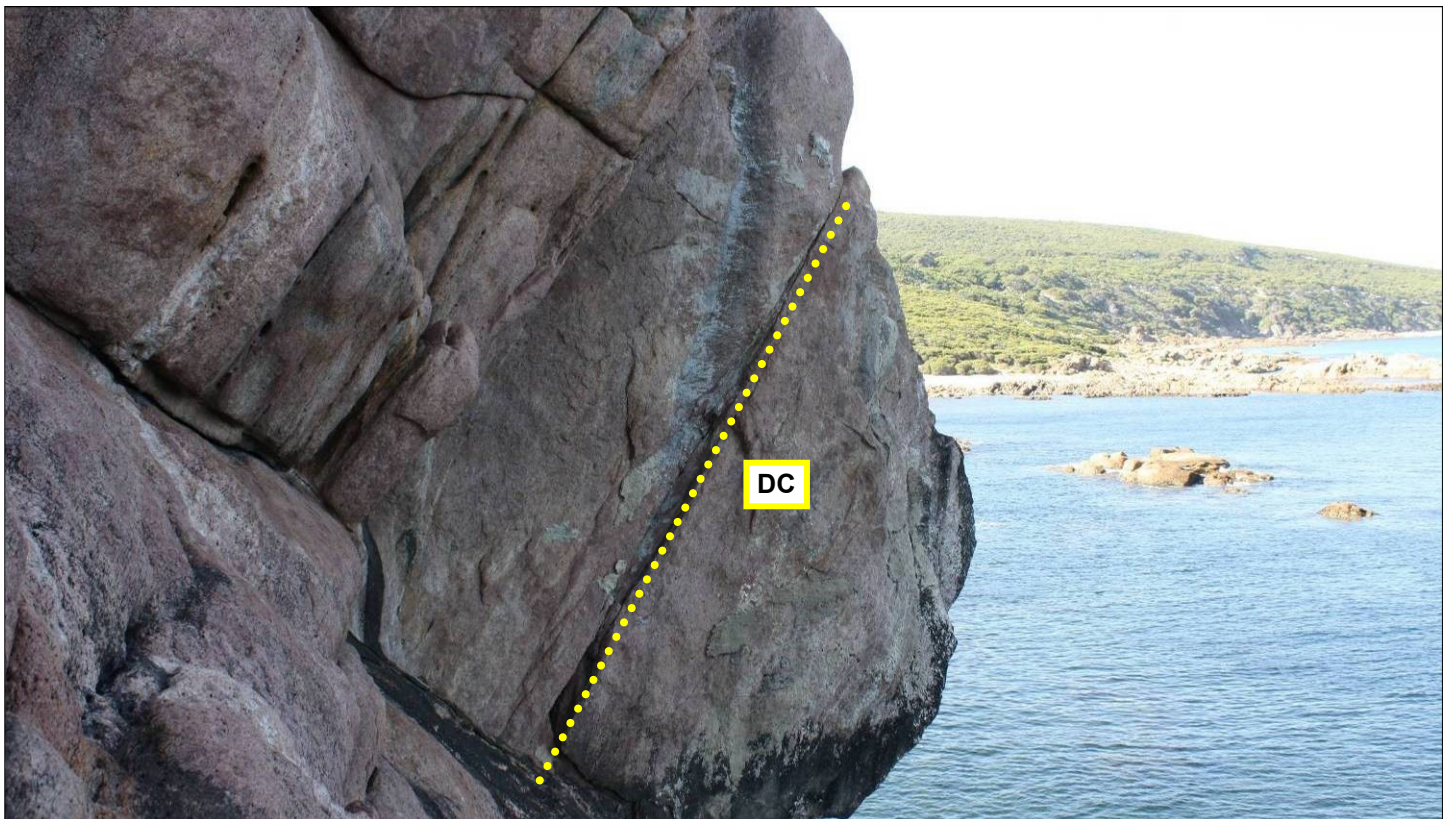
Sand Blast Wall



Sandy Sunday (10m, 13)

The longest line on this wall. Up the steep wall to gain access to the rounded crack system in the headwall, tend left and stay out of the chimney (Craig Johnson, Krish Seewraj 2011).

Fisherman's Perch



Doubtful Casting (6m, 19)

The pumpy right tending crack, for such a short line it feels pretty exposed and fearsome (Krish Seewraj, Craig Johnson 2011).

Boulder Wall



Murphy's Scramble (6m, 10)

The grade is right for those who can jam, if you can't then struggle up the wide crack at the left of the crag. From the ledge ascend the short wall on more forgiving cracks (Craig Johnson, Krish Seewraj 2010).

Project (6m)

Up the curving crack in the middle finishing up the crack in the short wall above, as the lower wall doesn't provide much in the way of protection it yet to be led.

Over Extended (6m, 8)

The slab at the right end of the crag could be a good beginner's climb, but to get going it requires a big step up making for a committing start (Craig Johnson, Krish Seewraj 2010).



Mario De Decker contemplating the next moves and what to hold onto on Sir Lancelot (19)



Steve Sterling showing he can multi-task, clipping the rope and looking for the next moves on Over Extended (8)



Ryan Doe becoming reacquainted with the atmosphere of the place after a long absence on Bulging Pockets (13)



Lou Fisher ignoring what lies below as she searches for the holds on Cape to Crack (17)



Apr 2026