

Organ Pipes (Wilyabrup) Climbing Guide

Krish Seewraj



Warning about Rock Climbing

Keep in mind that this is only a guide, it helps climbers to find out what climbs have been recorded and that is all. The information given is true and accurate to the best of the author's knowledge.

Remember climbing is an adventure sport and as such accidents may result in serious injury or death. The grades and descriptions may be subject to debate as many of the climbs have only had a few actual and/or known ascents. Therefore, be warned that you must exercise your own judgment with regard to the route location, description, difficulty and your ability to safely protect yourself from the risks of rock climbing.

You should not depend on any information gleaned from this mini-guide for your personal safety. Your safety depends on your own experience, equipment and climbing skill. If you have any doubt as to your ability to safely attempt any route described in this mini-guide, do not attempt it. When you use this mini-guide, you accept and acknowledge the risk that it may contain errors. The responsibility for your safety is solely yours.



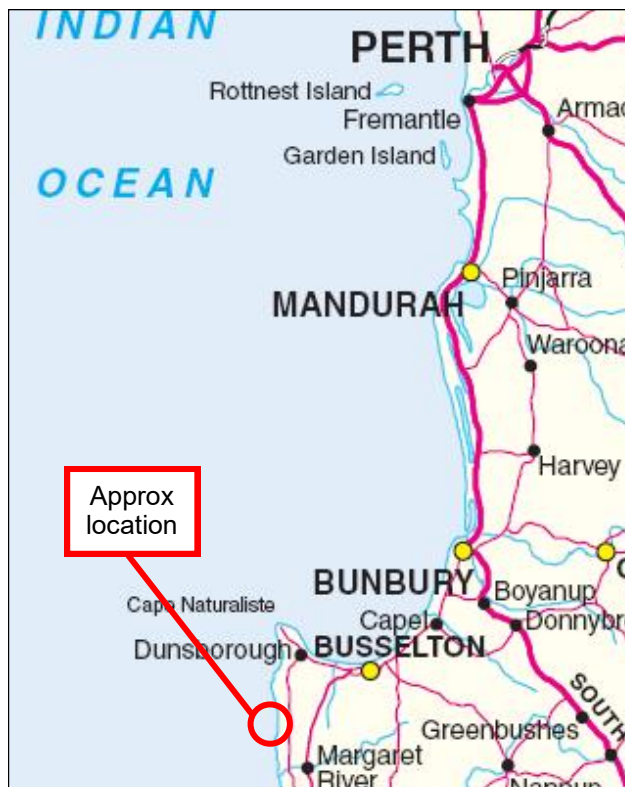
The best way to access the Organ Pipes

© December 2025 Krish Seewraj
All rights reserved. No part of this guide
may be reproduced or transmitted in any
form or by any means, electronic or
mechanical, without written permission
from Krish Seewraj, kermit@iinet.net.au

Front cover image: Lou Fischer taking on the sharp end with a first ascent of New Kids on the Block (14)
Rear cover image: Sam Avery enjoying the exposed and well protected traverse under the sickle on Spraying (14)

Introduction

Wilyabrup is the most frequented climbing area in the South West of Western Australia. The biggest walls of the main area are well documented on The Crag, and also in three climbing guides if you are lucky to find one as they are all out of print. This mini-guide provides information on one of the lesser frequented and smaller crags all of which lie north of the main area of Wilyabrup. These stretch for some 1.2km along the coast, and all are best accessed from the car park that is used to get to the main cliffs. The only facilities here is a toilet with one of the best views possible, if only the window had been a bit lower.



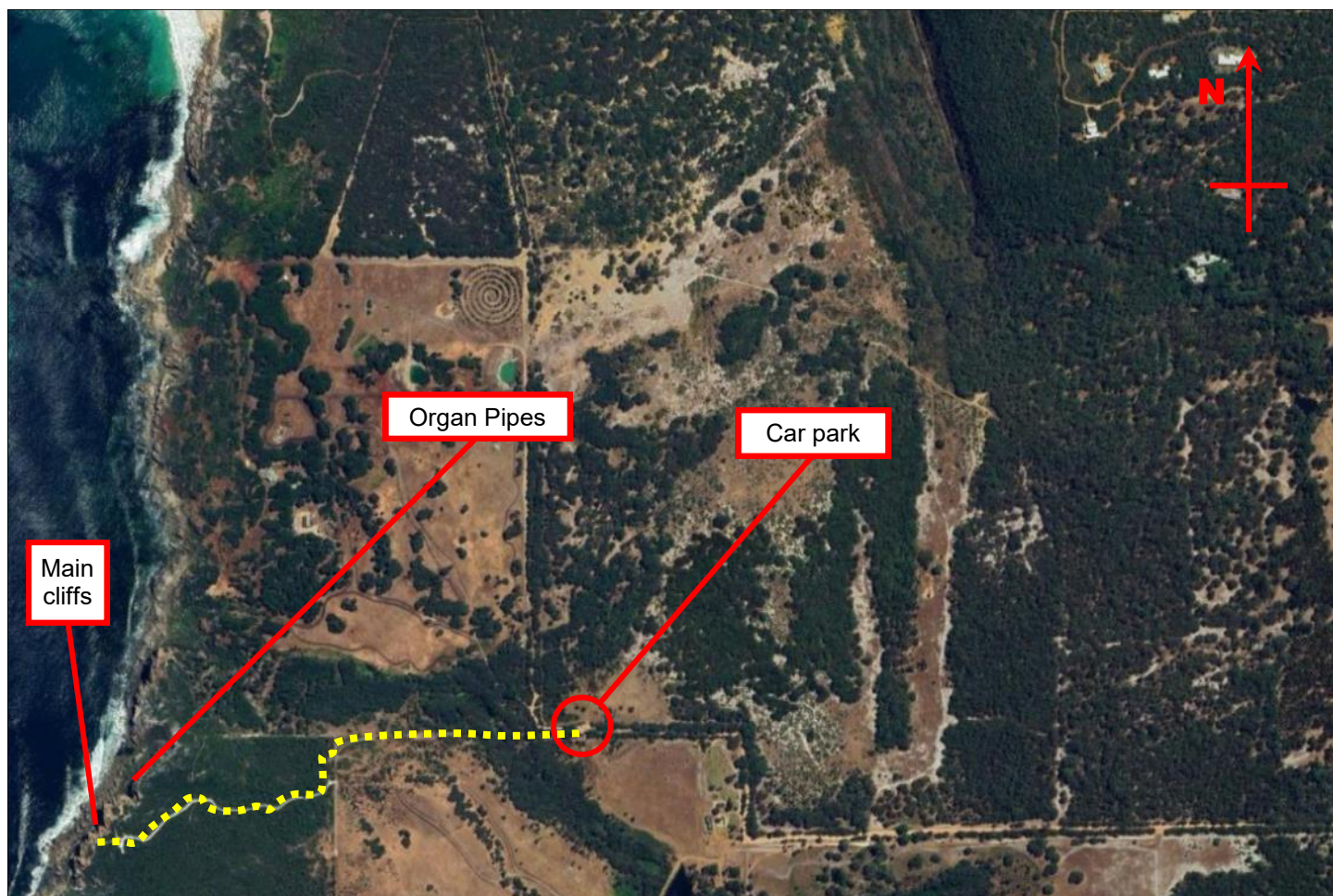
Location and Access

The crag is approx. 260km drive from Perth. From Busselton head south on the Bussell Highway, towards Margaret River. Approximately 18km down this road turn right onto Metricup Road. Where it ends turn left onto Caves Road, and after 2km right onto Wilyabrup Road. Follow this gravel road for 2.5km and just after a couple of 90 degree bends you'll find a parking area from where you can walk to all of the crags.

It is approx. 1km from the carpark to this crag which is just north of the prominent cliffs of Wilyabrup. The Organ Pipes can be access by walking along the top of the crag and abseiling in, or by following a goat track along the base from the main cliffs.

Future Development

If anyone would like to share their past or future experiences in this area, details of new or listed routes as well as any reference issues, typos or mistakes in this mini-guide email them to kermit@iinet.net.au.



Rock, Protection & Grading

The Willyabrup cliffs comprise gneiss, a layered hybrid of granite and sedimentary rock, so has a smoother feel than the granite outcrops to the north and south, such as Moses Rocks and Cosy Corner, which are detailed in other mini-guides. The rock is well featured so there are plenty of holds, however there are several routes which rely on small friction holds that take a little getting used to. Being a lesser used crags there may be some loose rock, as such care is required.

The routes are mostly on the upper wall, on a series of buttresses broken by gullies, as well as a heap of scrambly chimneys and corners many of which Mikie Howe climbed in 2017., Helping to boost his meterage during his self imposed mission to cleanly lead 10,000m without repeating any lines before he hit the big 40.

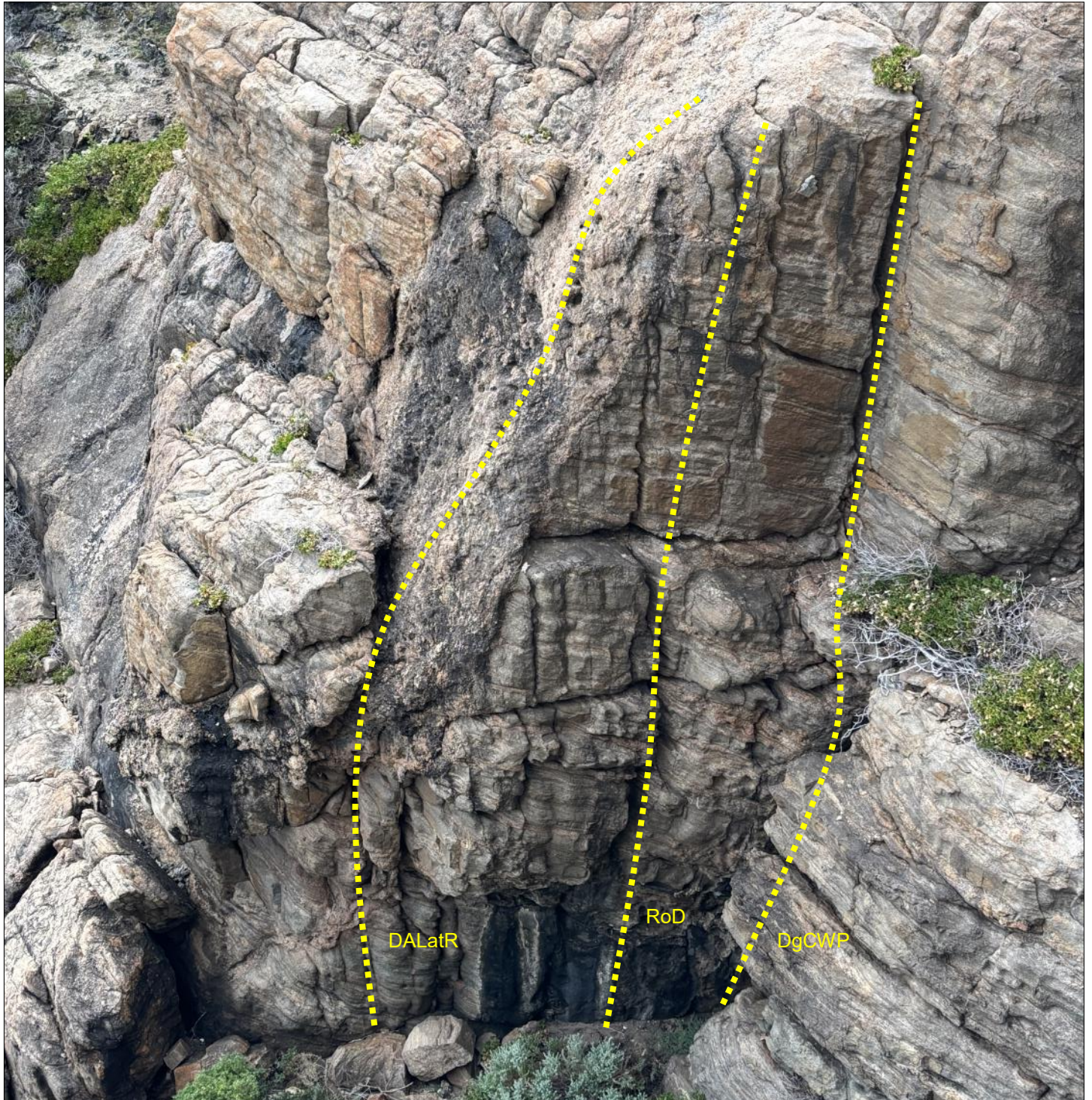
This crag offers a good range of traditional routes, which includes some fun and varied features including flakes, cracks, arêtes, chimneys, and overlaps. A full and varied rack is required, and don't forget the extra gear to set up your abseil if you are dropping in from above.

There is nothing too hard here but there are a few serious lines because they involve runouts on nervous territory. This makes it an ideal place to test your true trad metal, even though the grades only from lowly single digits to the high teens.

General Area Topo



Rainy Day Crag



Hidden from view from the Organ Pipes, and tucked away at the base of the main gully. Best accessed by a scramble down. Spotted during a rainy day solo mission, and the routes were established on a day when we expected the heavens to open on us, but they never did.

Don't Always Look at the Rain (10m 12)

Squeeze up the chimney, followed by a delightful corner (Chris Howe, Krish Seewraj 2025).

River of Dreams (10m, 17)

Work your way up the middle of the wall trying to place gear before pumping out, and then keep your nerves up the slightly runout headwall (Chris Howe, Krish Seewraj 2025).

Don't Go Chasing Waterfalls (10m, 13)

Steeply up the left side of the wall, before delicately tip toeing up the slab (Krish Seewraj, Chris Howe 2025).

Organ Pipes (right walls)



Dry Reach (12m, 14)

The wall towards and finishing up the crack (Trebec (solo) 1992).

Crab Arete (10m, 12)

The arête (Trebec (solo) 1992).

Sprint Finish (15m, 10)

Fun stemming up the wide chimney left of Crab Arête (Mikie Howe, Krish Seewraj 2017).

Reaper Man (17m, 19/20)

Up the blank wall right of Heaven Calling, the unprotected top wall is a serious proposition (Krish Seewraj 2022).

Heaven Calling (17m, 16)**

A great line up the crack to finish up the right trending flake, which unfortunately doesn't take gear (Carroll 1985)

Knocking on Heaven's Door (15m, 17)

The wall between Heaven Calling and Spraying leads to a fine steep orange headwall, after placing gear at the break knock on each flake before committing with no more gear in sight (Krish Seewraj, Chris Wiggins 2018).

Dog with a bone (15m, 16)

Climb the face just left of Spraying, avoiding the corner and arête for best value. Mount the roof of the sickle and keep your nose on the thin seam above, pointlessly sniffing about for gear (Krish Seewraj, Ash Gale 2022).

Spraying (15m, 14)*

A fun climb. Straight up to the sickle flake, traverse under this and pull up into the corner (unknown).

Spraying Arête (15m, 12)

An easy scramble up the arête to finish as for Spraying (**Shane** Richardson (solo) 1992).

East Face (right side)



Oral Discharge (10m, 10)

Easy climbing up the cracks in the narrow chimney left of Spraying Arête (Trebec (solo) 1992)

It Still Counts (15m, 4)

The narrow cleft in the back right corner right of the Honest Box that widens with height (Mikie Howe, Krish Seewraj 2017).

Honesty Box (10m, 18)

The back wall in-between It Still Counts and Oral Discharge. This wall was climbed independent of the side walls, with an airy and exciting finish into the unknown. A great sustained line with some interesting challenges, but requiring honesty to stay on route as it is sadly easily escapable (Ryan Doe, Krish Seewraj 2020).

Vomiting Frogs (12m, 14)

A questionable grade as it would be a serious lead up the lower wall, as early guidebooks suggest and shown in the topo above, with no protection and certainly not at this grade. It may be more likely that this route took the corner to the left of Honesty Box (Trebec (solo) 1992).

English Summer (17m, 15)

Use the thin seam/crack to ascend the wall before stepping left to finish up the arête (Potter 1989).

Sunny Arête (15m, 12)

A pleasant arête (Trebec 1992).

Sunny Sidewalk (15m, 12)

Start-up Sunny Arête, until you have the confidence to step left onto next pillar just above the undercut flakes to take the sidewalk up the pleasant slab (Krish Seewraj, Sam Avery 2025).

East Face (right side)



New Kids on the Block (10m, 14)

A fun well protected route, after the slab find a way up the cracked wall (Lou Fischer, Glen Sullivan, Krish Seewraj 2016).

Short and Sharp (10m, 17)

This climb goes up the next wall to the left. Up the slab and steep face on small holds and gear (Krish Seewraj, Steve Sterling 2014).

The Grunter (15m, 16/13)

Approx. 5m left of Shot and Sharp the base of the crag is overhung. Grunt your way up the bouldery moves via the break in the rooflet. Trend right up the slab to the narrow crack line that splits the buttress to the right of the chimney. The bouldery start can be avoided by accessing the slab a meter or so to the left making a more consistent grade 13 route (Ryan Doe, Krish Seewraj, 2020).

The Screamer (15m, 17)X

Access the slab from the far left and trend right before taking on the steep face, at the base of which good small gear is soon a distant memory. Not for the light hearted, and while true to the grade with fun climbing this route gets very run out (Krish Seewraj, Ryan Doe 2020).

10K (15m, 8)

Start as for The Screamer climb the slab directly to gain a fun well protected crack in the left of the headwall (Mikie Howe, Krish Seewraj 2017).



Chris Howe working the nervous top moves above the last runner on the Honest Box (18)



Gave Stewart and Moni Cucile enjoying another grand day out on Sunny Arête (12)



Ryan Doe trusting in my advice that the start moves go during the first ascent of The Grunter (16)



Glen Sullivan pondering where the next gear will be on Crab Arête (12)



Chris Wiggins wondering which holds will hold during the first ascent of Knock on Heavens Door (17)



Mikie Howe keeps the pace up, during another day we aim to climb 300m, on the first ascent of Sprint Finish (10)



December 2025